

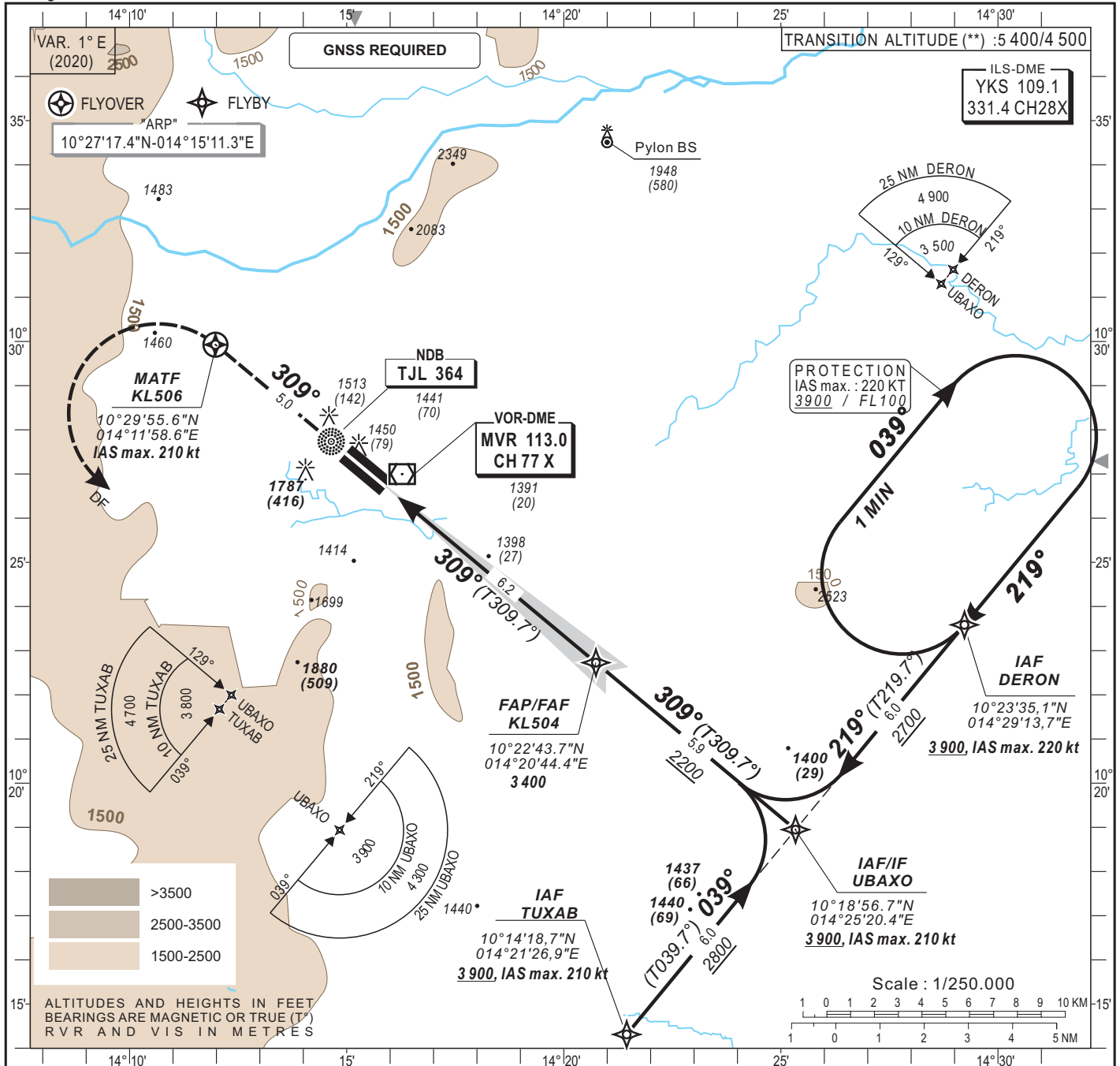
INSTRUMENT APPROACH CHART
Categories A-B-C

ELEV. : 1391
THR : 1371

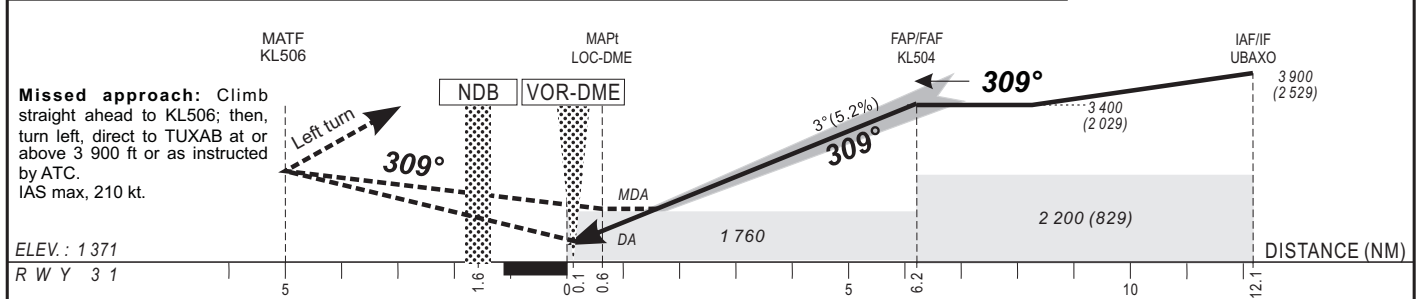
Maroua Tower : 118.9

MAROUA/Salak (FKKL)
ILS W or LOC W - RWY 31
IDENT ILS "MVR" 109.1

HEIGHTS RELATED TO THRESHOLD 31 ELEVATION



Distance to ILS-DME (NM)	FAP/FAF		6	5	4	3	2	1	Notes: - RDH: 15 m
Altitude (ft)	3 400		3 270	2 950	2 630	2 310	2 000		



OCA(OCH)	A	B	C	D	Ground speed (kt)	kt	90	100	120	140	160	180
Cat.1	1522(151)	1534(163)	1542(171)		Rate of descent (ft/min)	ft/min	475	525	630	740	840	-
LOC-DME	1756(385)				Timing FAF-MAPt 5.6 NM	min:sec	3:44	3:22	2:48	2:24	2:06	-
CIRCLING*	2082(691)	2082(691)	2372(981)									

Timing not authorized for defining MAPt (LNAV).
 (*) Heights related to aerodrome elevation.
 For data tabulation, see verso.
 (**) Transition altitude: 5400 ft from QDM 058° to 228° and 4 500 ft from QDM 228° to 058°

CORRECTIONS: New edition.